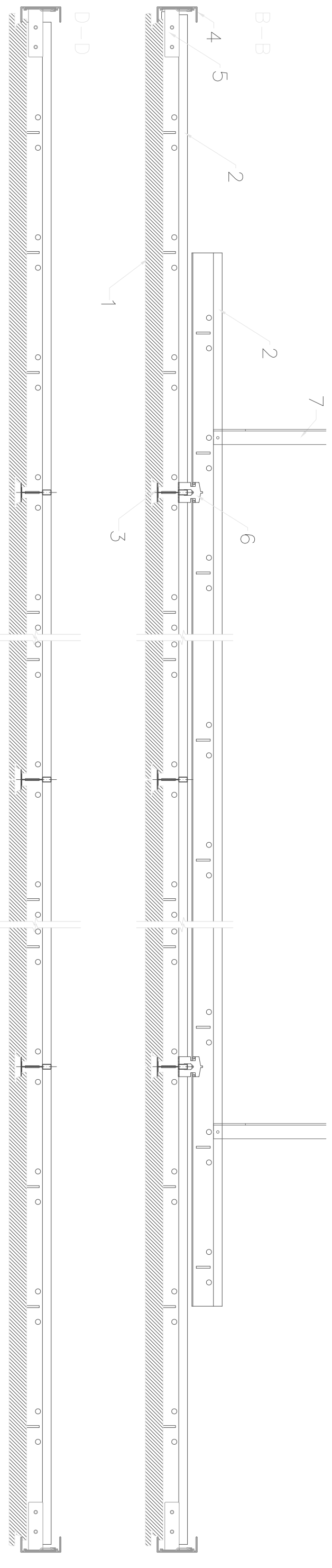
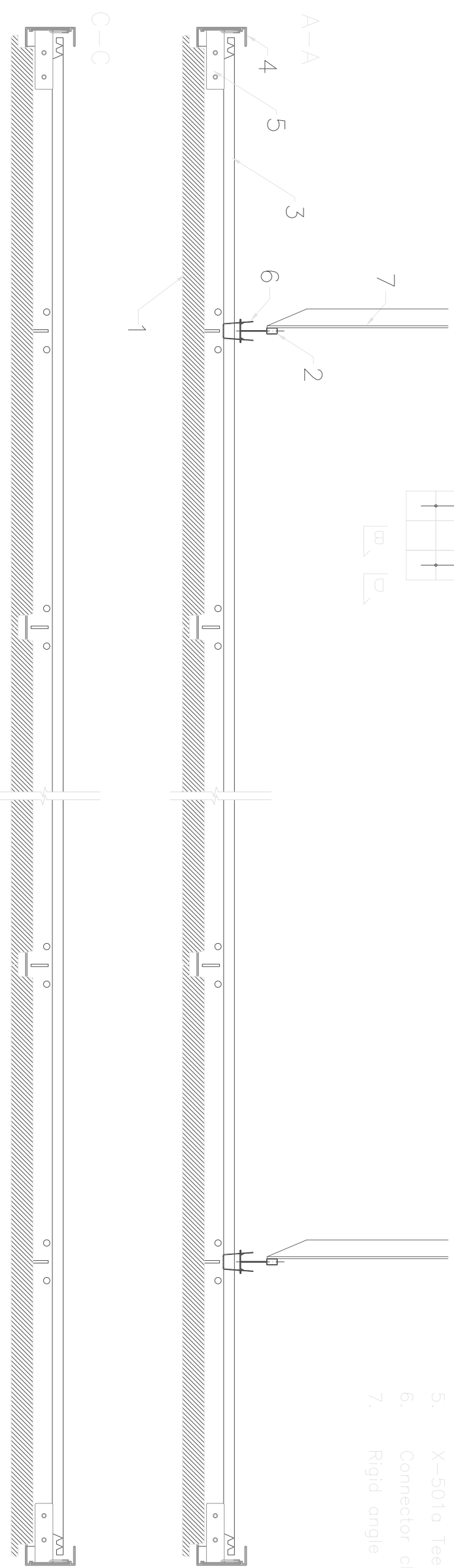


1. Tile ROCKFON with X edge
2. Main runner T24
3. Cross tee T24 1800mm
4. RL-US50 channel
5. X-501a Tee bar clip
6. Connector clip ref:122
7. Rigid angle hanger



All screws and other fastenings shown are indicative and illustrative only.
Specific fasteners should be chosen dependent on substrates and materials being used.

Information:
Natural light from windows – X-edge multimodule island

Date:

Drawing Type:

Drawing No.:

Drawn by:

Scale:
1:5

Contact Information:

We kindly draw your attention to the fact that the above drawings should be considered as guidelines and therefore are without responsibility on the part of Rockfon Limited.